

# Working in and around vehicles

**WORKSAFE**

Mahi Haumaru Aotearoa

**Ruth Cook**

Engagement Lead, WorkSafe





## ShopCare:

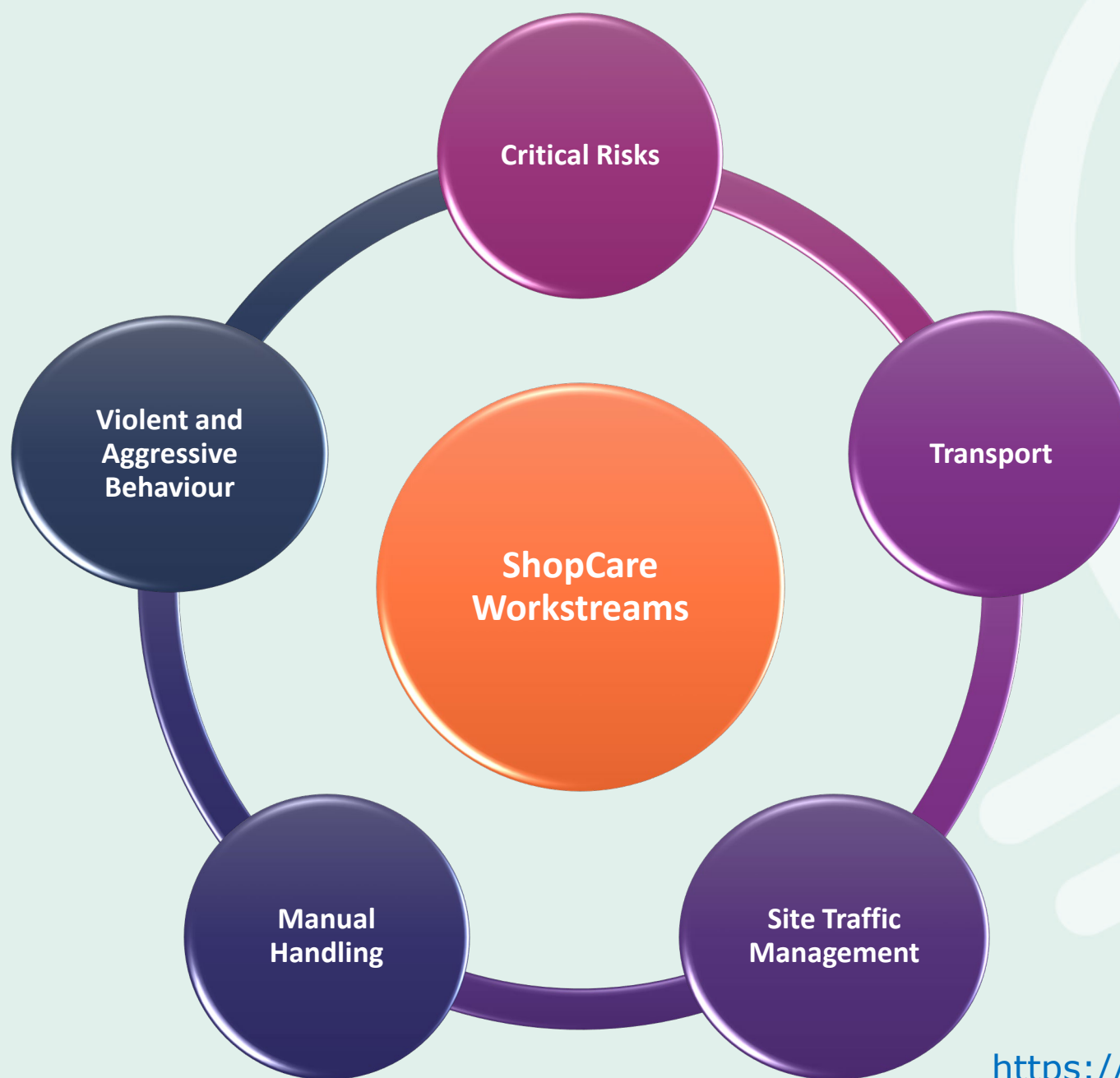
**Health & safety industry association for retail, supply chain, manufacturing and transport**

- **Purpose**

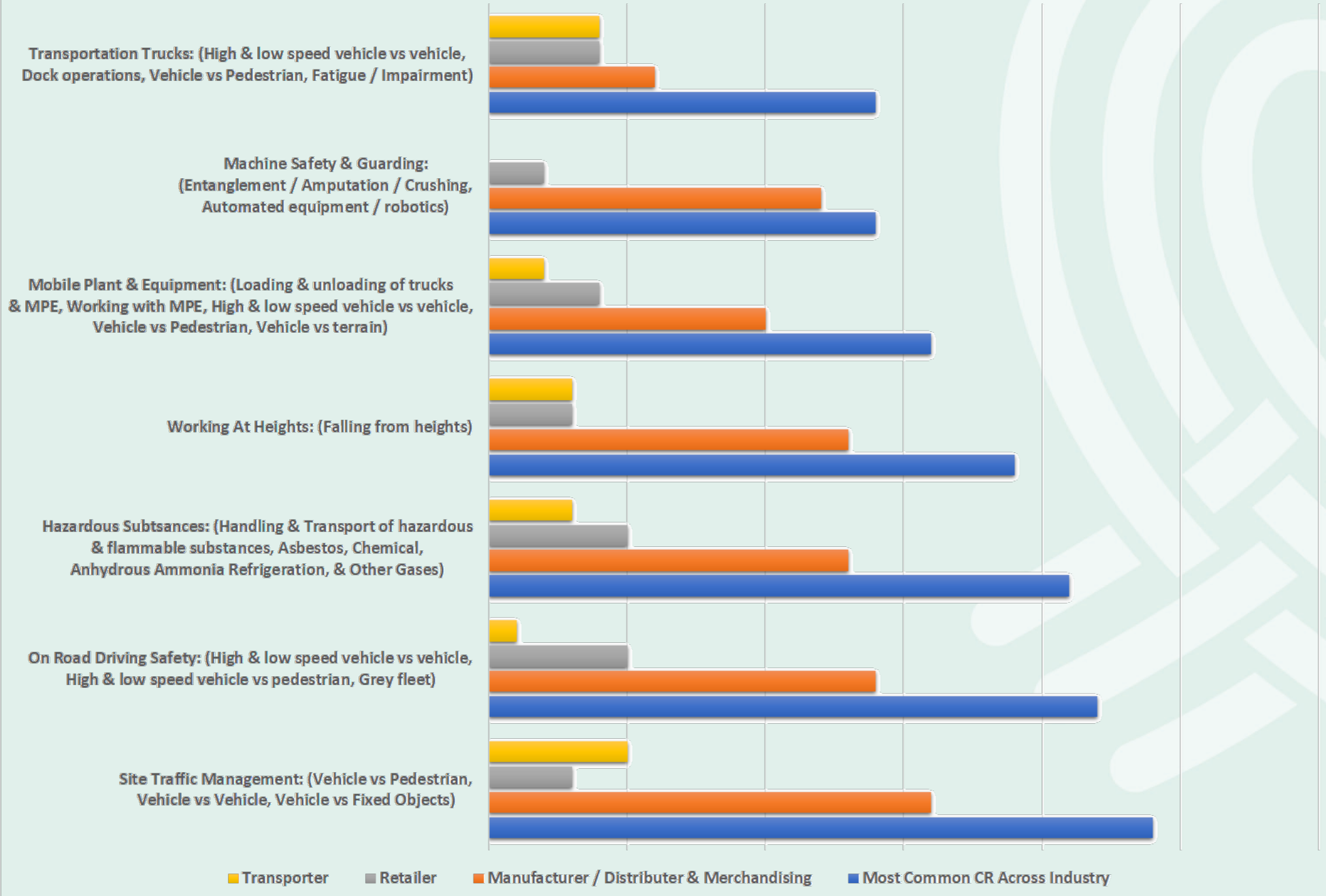
*ShopCare aims to accelerate the reduction of work-related death, injury and ill health in Retail and Supply Chain.*

- **Vision**

*Connecting for healthier workplaces*



## Retail, Manufacturing & Supply Chain Most Common Critical Risks



# Working in and around vehicles

**WORKSAFE**

Mahi Haumaru Aotearoa

**Ruth Cook**

Engagement Lead, WorkSafe



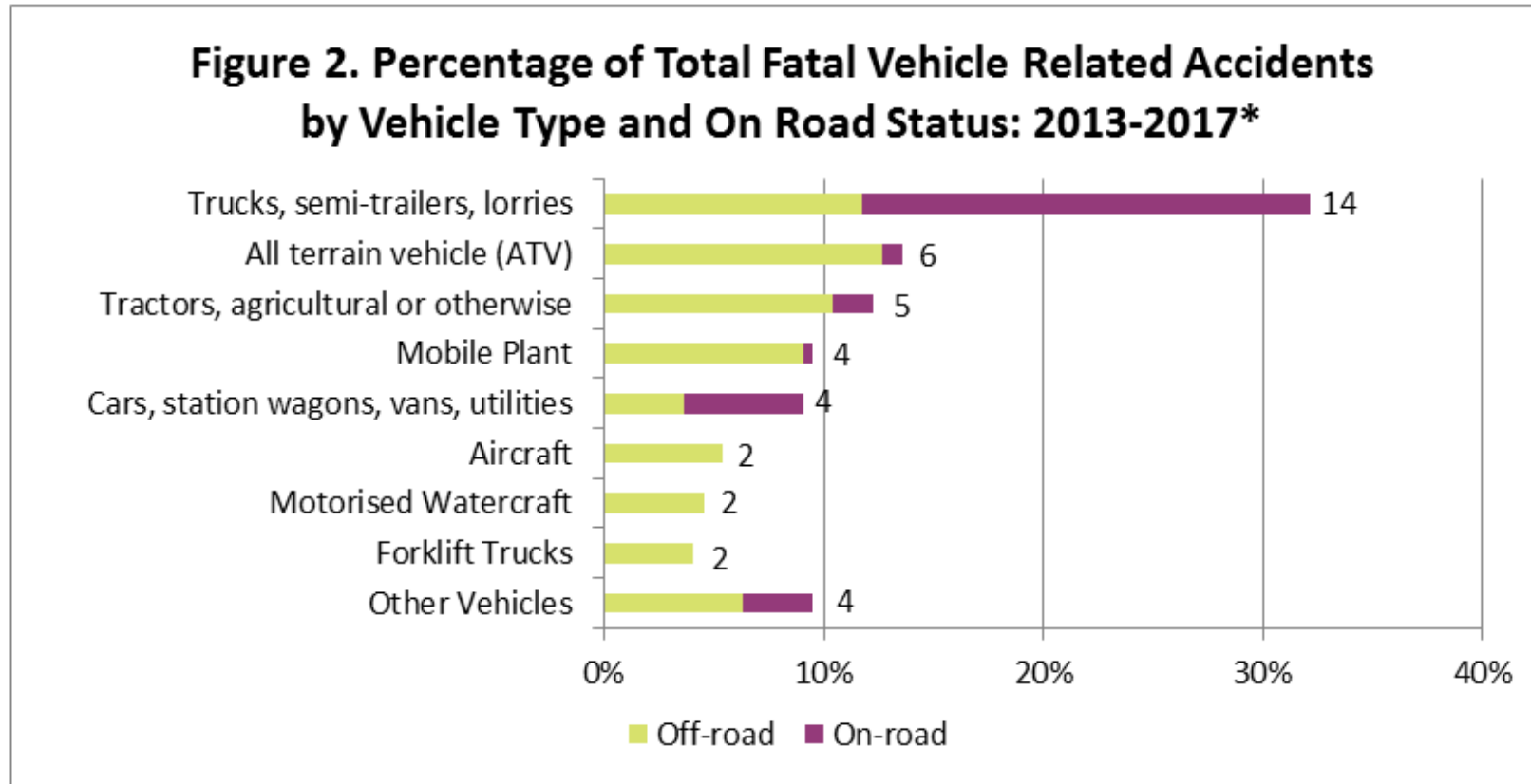


At least

**73%**

acute workplace fatalities  
involved a vehicle

# Fatalities – Vehicle type



**Source:** SWIFT (manual recode)

**Extracted:** 7/01/2019

**Note:** Because this data was produced using a manual recoding process it will not align with previously released information.

\* Annualised fatality count is included at the end of each bar.

---

# Work- related health

- Exposure to diesel exhaust
- Back pain
- UV exposure





---

# Key harm mechanisms

- Site traffic management
- Safe load management
- Falls
- Non-use of seatbelts
- Upstream pressures



**Do something differently**

---

# Using the supply chain



---

# Higher level controls



---

# What WorkSafe is doing

- Focus on risks created by working in and around vehicles
- Increased focus on the Transport, Postal Warehousing sector
- Working together with NZTA and CVST



---

# Seatbelts and site traffic management

- Fact sheet and good practice guidelines
- Marketing campaign
- Inspector focus



---

# Some questions to leave you with

- If things are to change, what are you going to do differently?
- How can WorkSafe support you in doing this?

**Any questions?**





Ruth Cook  
[Ruth.cook@worksafe.govt.nz](mailto:Ruth.cook@worksafe.govt.nz)  
021 834 576

Getting you home healthy and safe.  
That's what we're working for.

**WORKSAFE**  
Mahi Haumarū Aotearoa

CBAFF Administration Team

(09) 419 0019



**Contact us:**

**Liz May (CEO)**  
027 444 0721, [liz@shopcare.org.nz](mailto:liz@shopcare.org.nz)

**Wes van Deventer (Business Manager)**  
027 5454 837, [wes@shopcare.org.nz](mailto:wes@shopcare.org.nz)

**Catherine Ross (Transport Business Development Manager)**  
021 193 3787, [catherine@shopcare.org.nz](mailto:catherine@shopcare.org.nz)

<https://www.shopcare.org.nz/>  
<https://www.linkedin.com/company/shopcare/>

