



Joint MPI & Customs DTR Seafreight Project Webinar for CBAFF – 9th August 2023

DTR Sea Freight Project

Ministry for Primary Industries
Manatū Ahu Matua



NEW ZEALAND
CUSTOMS SERVICE
TE MANA ĀRAI O AOTEAROA

DTR Seafreight Implemented

Domestic Transshipment Request (DTR) for Seafreight has been implemented 3 July 2023.

A DTR is now required to move uncleared sea-freight from one approved facility (CCA/TF) to another approved facility.

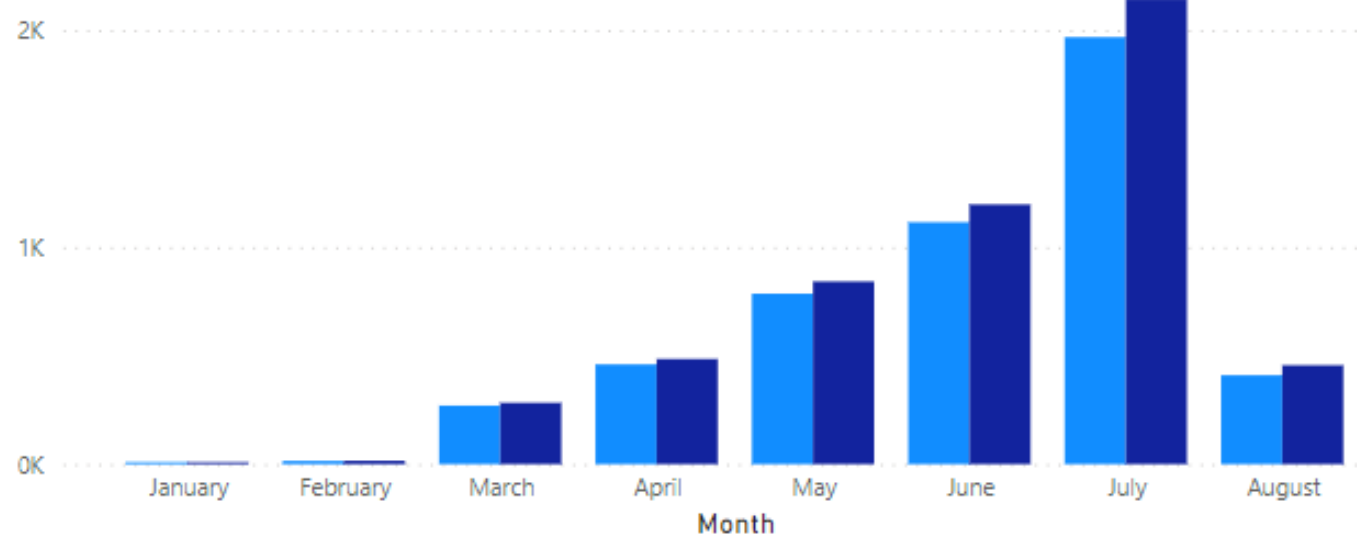
FAK movements from Port to CCA/TF

Submitters:

1. MPI requires the following attachments to be submitted:
 - A. Quarantine Declaration
 - B. Bill of Lading
 - C. Manifest
2. QD to be entered on the lodgement correctly as per what is on the physical QD document e.g. YYNNN. Make sure the QD is entered against each consignment correctly.
3. Location of Goods (LoG) refers to the premises where the consignment will be held awaiting clearance. Therefore, the LoG needs to be the [correct port codes](#) (UNLOCODE) for FAK movements not the CCA code.

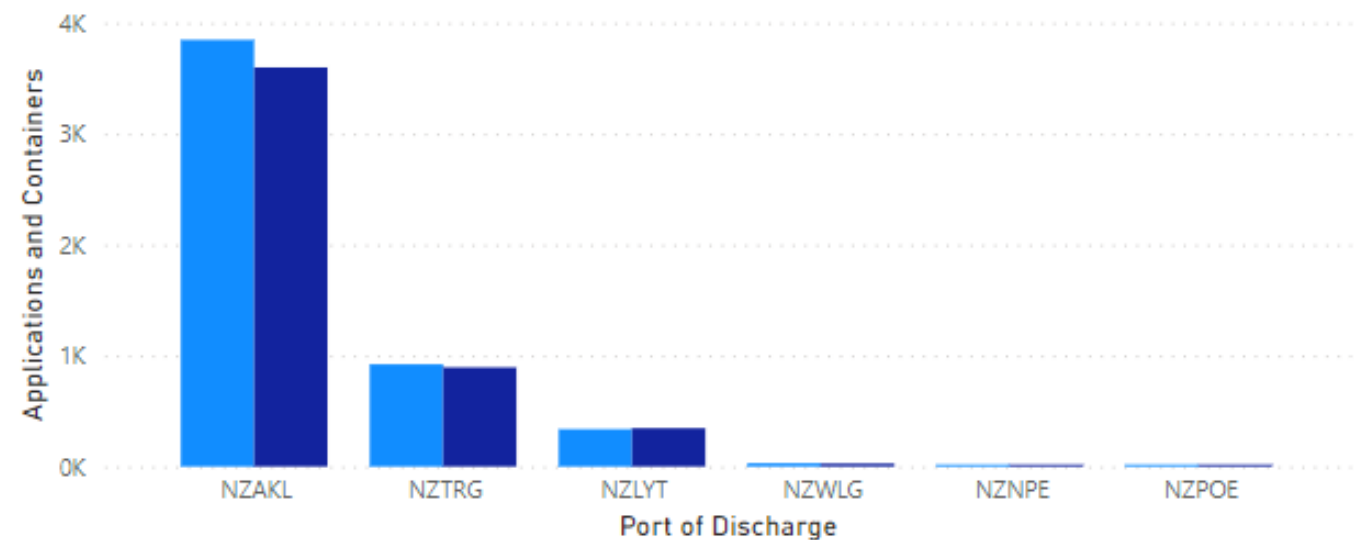
Number of FAK applications per month

● DTRs & Containers ● Count of IDandCN



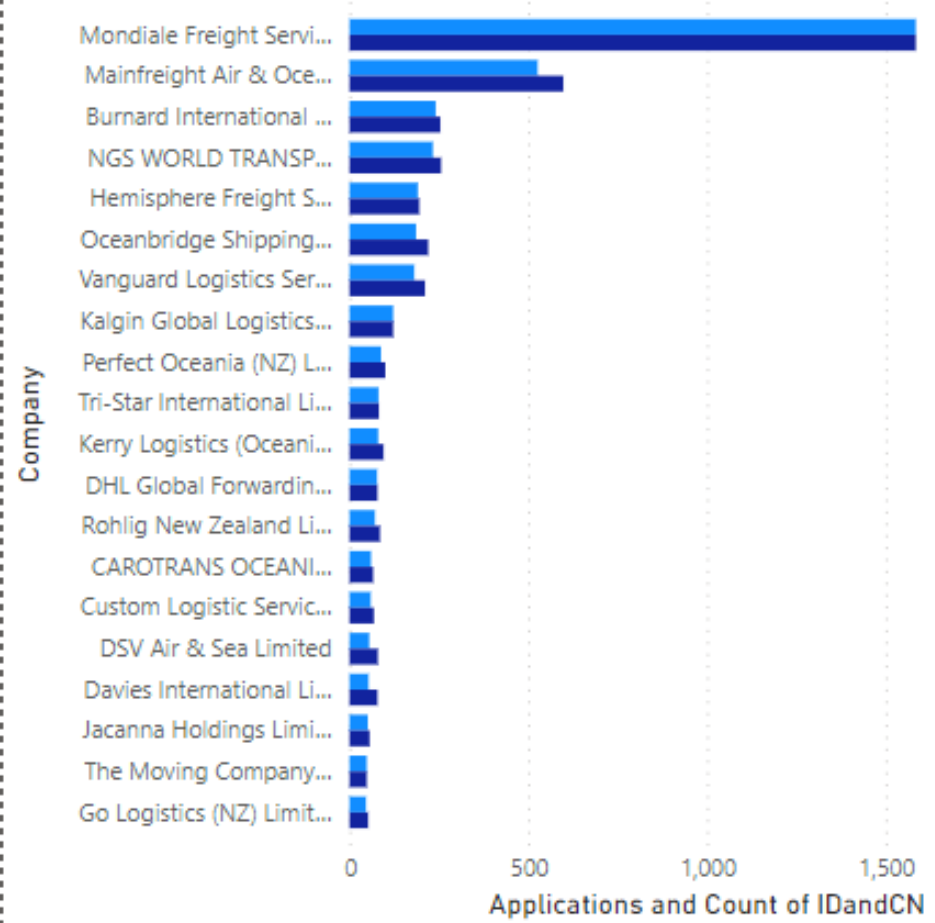
Applications and Containers by Port of Discharge

● Applications ● Containers



Total FAK Applications and Containers by Company

● Applications ● Count of IDandCN



5008

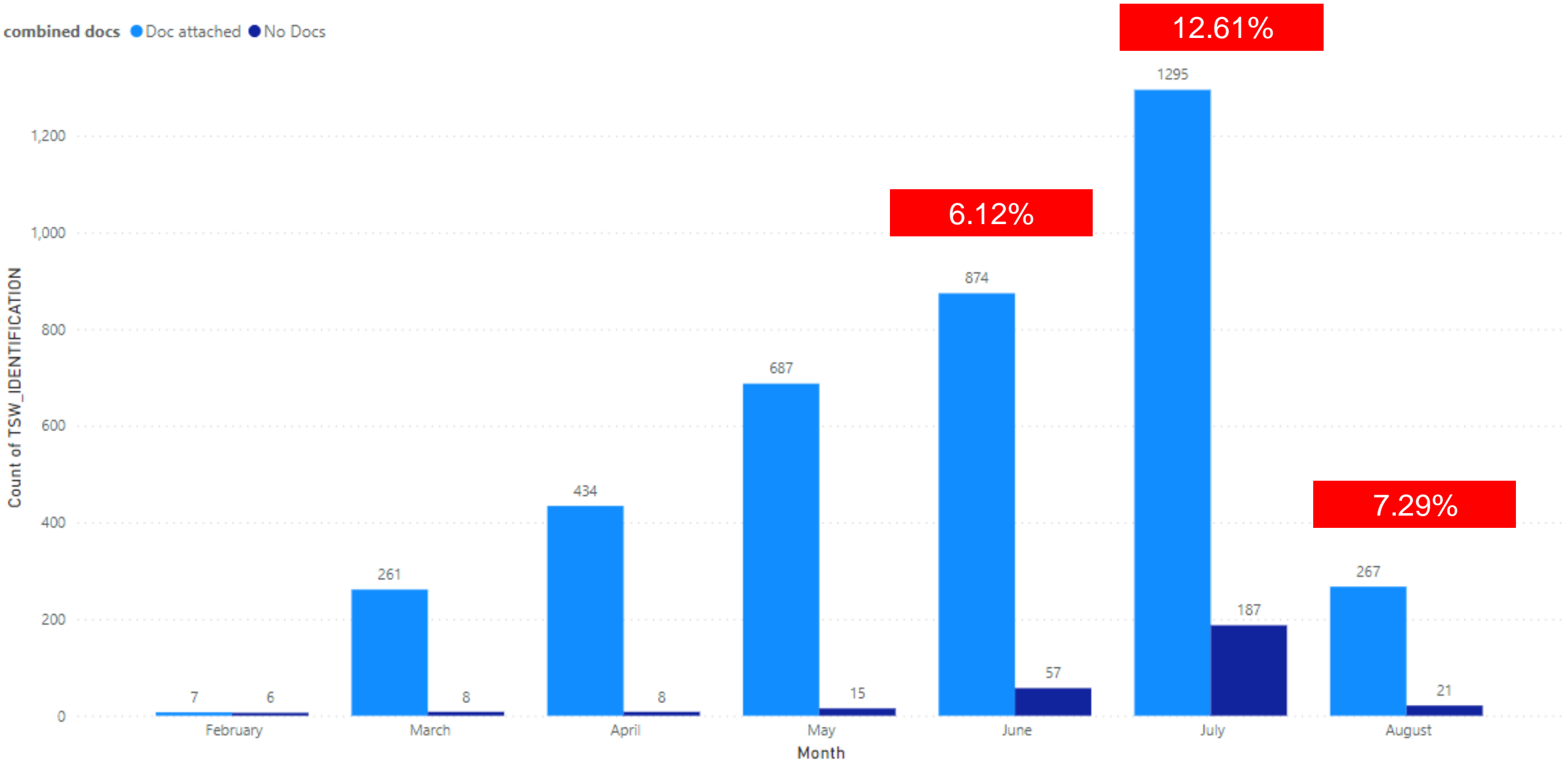
DTRs SUBMITTED

4671

CONTAINERS MOVED

DTR REQUESTED FOR MOVEMENT OFF PORT WITH NO DOCUMENTS ATTACHED

combined docs ● Doc attached ● No Docs



Status of Ports

Port	System / Interface	Phase 1 FAK from Port to CCATF
Port of Tauranga	Navis N4 / PortConnect	DTR Active
Ports of Auckland	Navis N4 / PortConnect	DTR Active
Lyttelton Port	Navis N4	DTR Active
Timaru	Navis N4 / PortConnect	DTR Active
Northport	Navis N4 / PortConnect	TESTING
Centre Port	Navis Master Terminal	DEVELOPMENT
Port Nelson	Navis Master Terminal	DEVELOPMENT
Port Otago Ltd	Navis Master Terminal	DEVELOPMENT
South Port	Navis Master Terminal	DEVELOPMENT
Napier Port Ltd	Navis N4	DTR Active
Port Taranaki	Email	DTR Active
Mount Maunganui	Email	DTR Active

- 98% of FAK imports take place through Auckland, Tauranga and Lyttelton
- All NZ Ports will need to be DTR Active by Friday, 1st September 2023

 LIVE

 IN PROGRESS

 DELAYED

Pilot Partner Status – Status of submissions

9 August 2023:

- The FAK VOLUME ON DTR is **97.18%**
- Number of submitters: **100**
- All FAK **Top 20** submitters are now on-boarded

DTRs for movement of devanned LCL consignments between CCA/TFs



Uncleared LCL consignments from CCA/TF to CCA/TF

A DTR will be required for the movement of devanned LCL consignments from CCA/TF to CCA/TF.

There is one small issue that will impact a small number of CCA/TFs which are not approved for Sea Containers when submitting a DTR to move LCL cargo to those facilities. The submitter will receive the following error message:



If you receive the following error: *"TF/CF specified as Transit Destination must be approved for containers"*. The DTR will be unable to be submitted. You are permitted to use your Collectors Permit to move these consignments in this instance. This is a known issue that will be resolved in the near future.

FCL Process

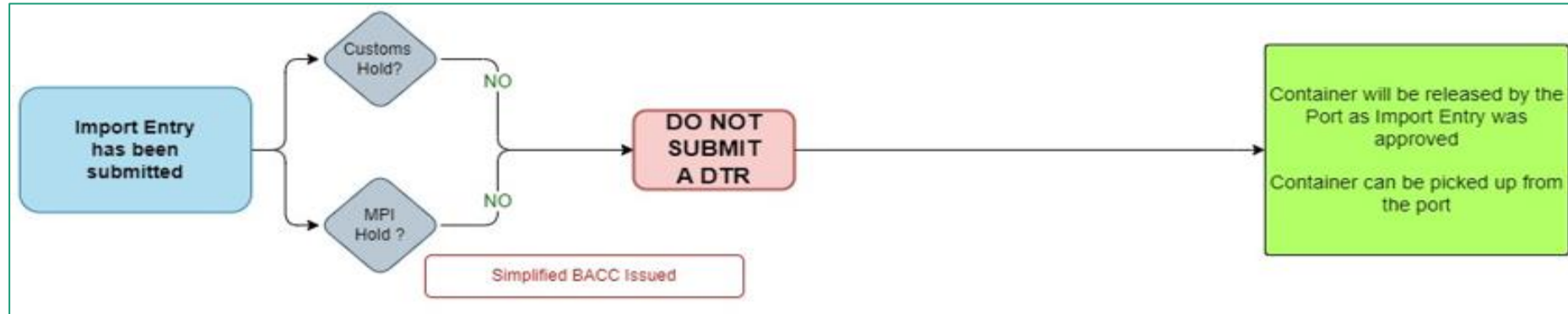
Scenario:

For the movement for uncleared FCL containers off the Port to a facility, this will require a full Import Declaration to be submitted.

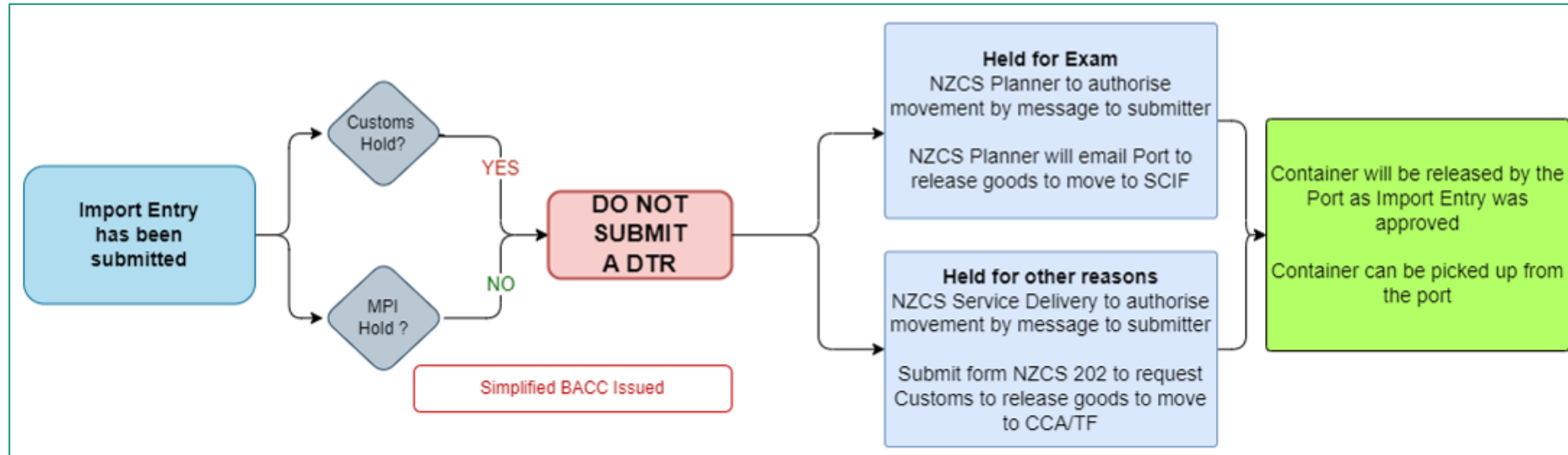
The following 4 scenarios show the clearance process when MPI or Customs have a HOLD on a container.

IMPORT DECLARATION SUBMITTED

1

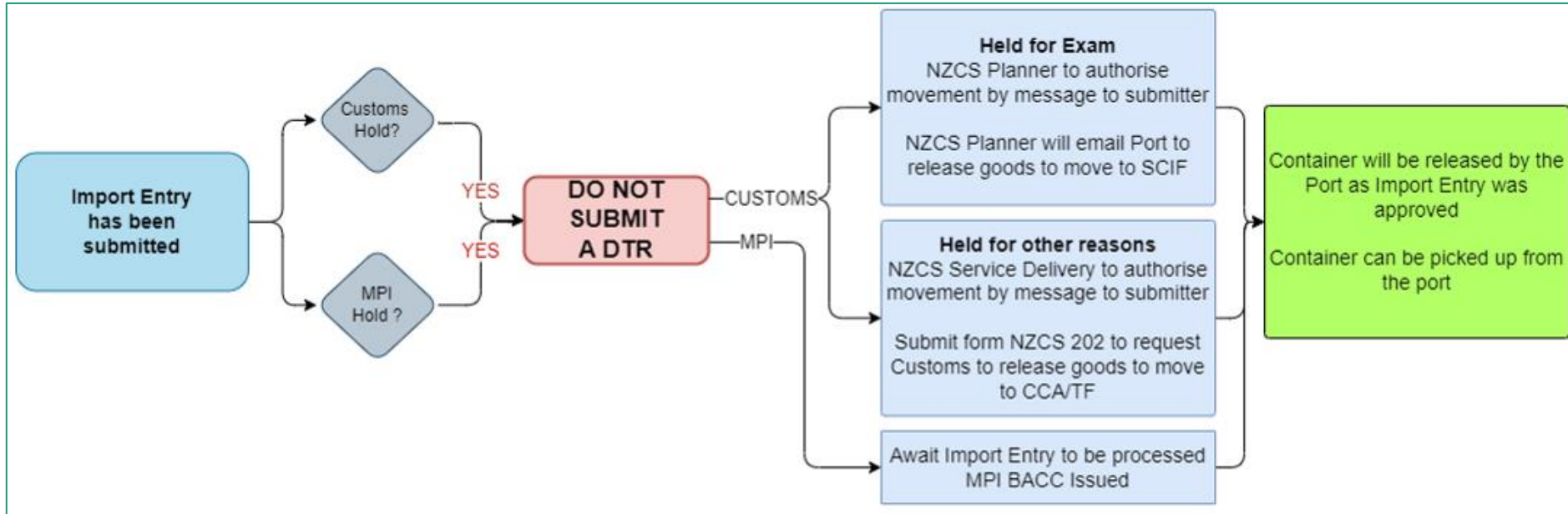


2

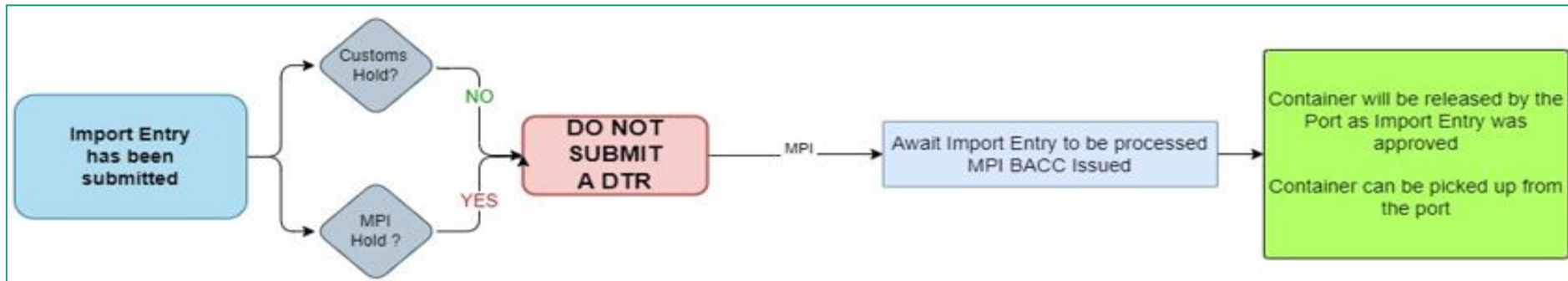


IMPORT DECLARATION SUBMITTED

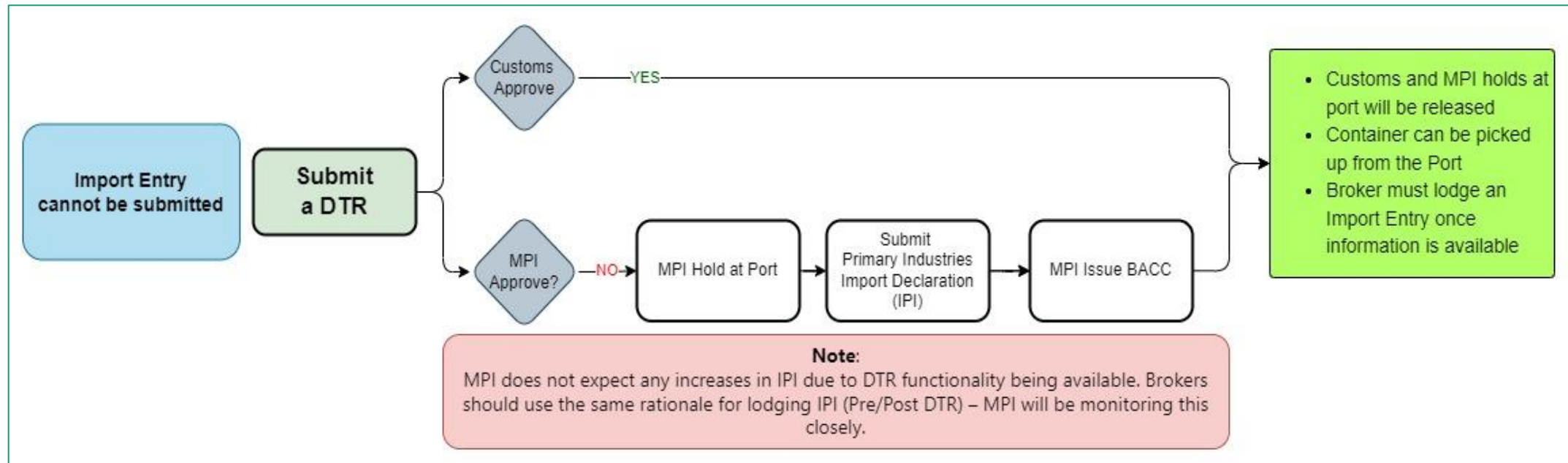
3



4



IMPORT DECLARATION CANNOT BE SUBMITTED



This process should be used in exceptional circumstances only when a full Import Declaration cannot be submitted

Cargowise (Wisetech)

Ocean Freight DTR processes - The DTR team, CBAFF and Cargowise (Wisetech) met recently to discuss issues being raised regarding the Ocean freight DTR processes.

The Wisetech team would like to please advise their clients to use the “e-request” option (found within the help menu in each screen) or by pushing F1 when experiencing errors / issues within their software.

This will capture screenshots and data for them to adequately assist you with your query.

Please also ensure you are reading the technical updates via the Cargowise home screen, or that can be found online, that are specific to the DTR process for the most up to date changes - these will include screenshots and step by step instructions.

More Information?

- <https://www.customs.govt.nz/business/trade-single-window/domestic-transshipment-request/dtr-sea-information/> - DTR Sea Information Page
- <https://www.customs.govt.nz/business/trade-single-window/domestic-transshipment-request/domestic-transshipment-request-dtr-sea-freight-faqs/> - DTR Sea FAQs

Questions

